

The image shows a modern building with a curved white canopy supported by white columns. The building has large glass windows and a white facade. The sky is blue.

**VISION
CLAD**

**Aluminum Composite Material
(ACM) Panel Systems**



**GRANITE
STATE
GLASS**

*Vision...
Performance...
Satisfaction.*

YOUR VISION... OUR PERFORMANCE... TOTAL CLIENT SATISFACTION.

ACM Panel Systems are more widely used today because they offer a crisp, clean and contemporary look. They are light weight yet durable, maintain their flat surface and have a paint finish made to last. Granite State Glass is proud to offer Vision Clad ACM Panel Systems.

■ VISION

Vision Clad Systems offer architects and designers the flexibility to make a design statement and then achieve those unique features and demands. The Vision Clad System utilizes ACM from Reynobond®, Alucobond®, ALPOLIC® and others which allows for a wide range of colors. The ACM panels are formable for curves, shapes and custom panel configurations. These systems are well suited for new buildings, retrofit and corporate image projects.

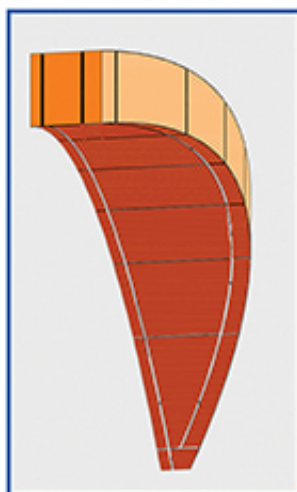
■ PERFORMANCE

Vision Clad Systems offer excellent all-weather performance with tested wet-seal and rain screen systems. The full in-house control of design, engineering, fabrication and installation makes Vision Clad Systems the ideal solution for architects, general contractors and building owners. As a completely integrated supplier, clients benefit from increased quality control and the ability to meet aggressive timelines.

■ TOTAL CLIENT SATISFACTION

Vision Clad Systems are the solution to many challenges in the design-build and construction arena. Vision Clad provides the balance of building envelope aesthetics, performance and identity clientele demand for their new or retrofit building. The flexibility of vision, superior performance and total client satisfaction upon completion ensure Vision Clad Systems will make your project a success.

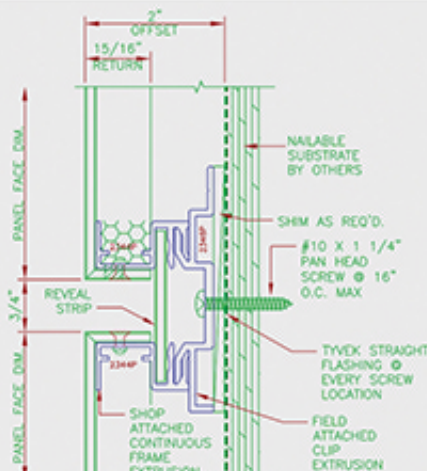
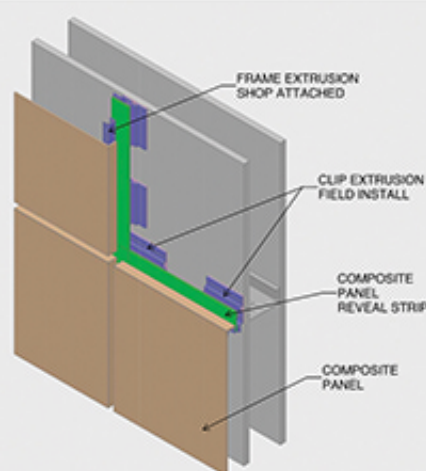
VISION



PERFORMANCE

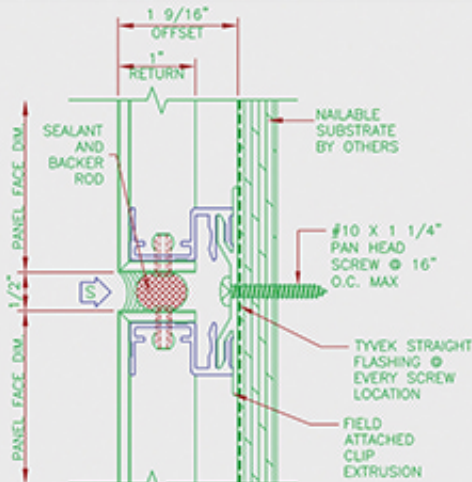
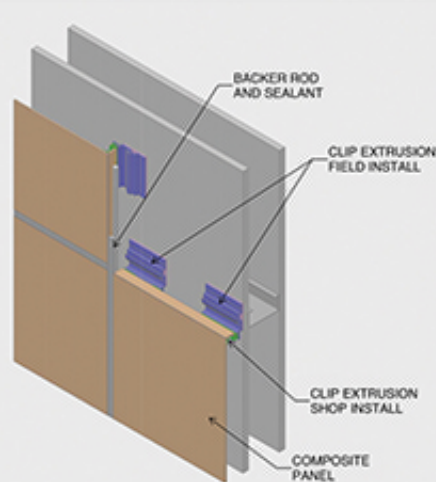


- Custom Design Solutions
- Budgets
- Product Specifications
- Exterior & Interior Wall Cladding
- Accent, Soffit & Fascia Panels
- 86,000 Sq. Ft. Facility
- Extensive Inventory - Colors
- Rapid Response Time



Vision Clad 2050 RS - 1/2" Joints Vision Clad 2075 RS - 3/4" Joints

- Pressure-Equalized with drainable compartmentalization to limit water penetration
- Exceeds AAMA 508 test standard ASTM283, ASTM 1233, ASTM 330 ASTM331, AAMA 501
- ACM Joint fillers strips (either 1/2" or 3/4") can match the panels or have contrasting colors



Vision Clad 1550 WS - 1/2" Joints

- Exposed Silicone sealed joints
- Exceeds ASTM 283, ASTM 330, ASTM 331, AAMA 501
- Economical and versatile system adaptable to complex designs



For over 35 years Granite State Glass has been serving the automotive, residential and commercial glass needs of northern New England. With 11 locations in New Hampshire and one in Vermont, Granite State Glass is the choice for those who understand the value of integrity and professionalism.

For more information or to make an appointment please email: info@granitestateglass.com.

There are many ingredients that contribute to the success of Granite State Glass which show our client base why "The Reason is Clear."



**GRANITE
STATE
GLASS**

4 Aviation Drive
Gilford, NH 03249
603-528-4748 • 800-543-4314
www.granitestateglass.com
info@granitestateglass.com

